

Extraction

220C

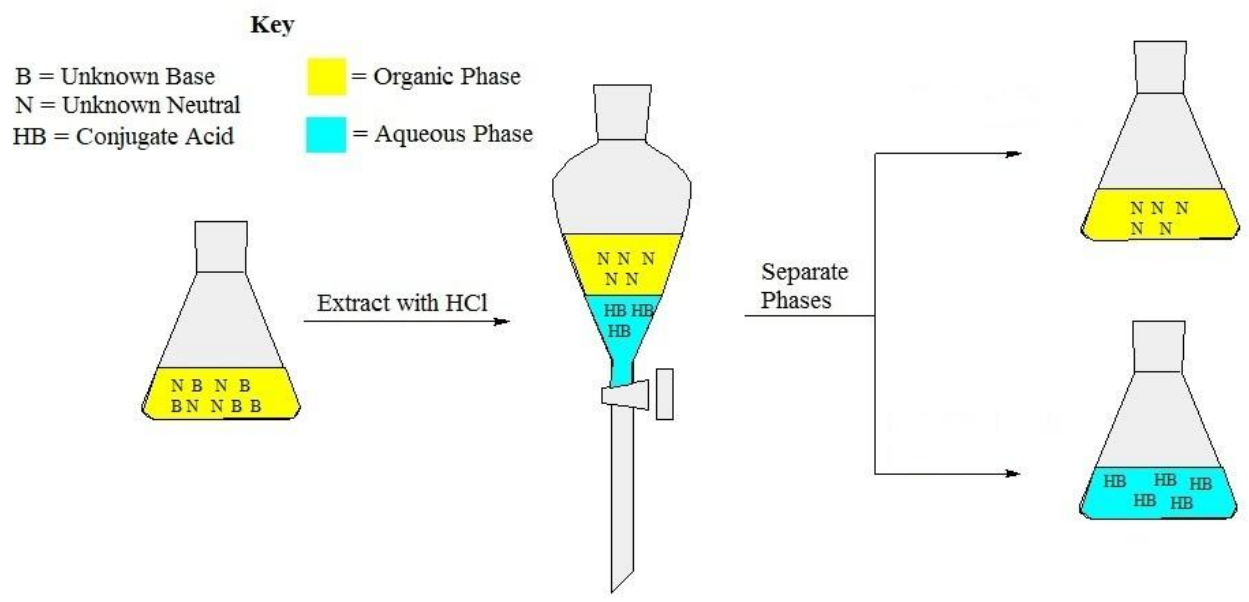
6/15/26

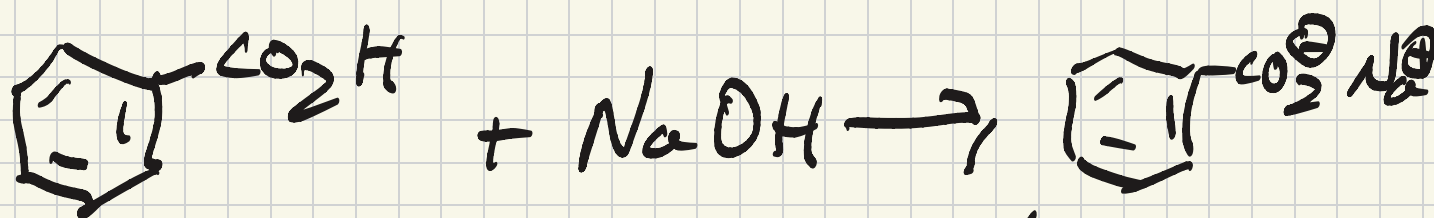
Solubility L/S

1. S_o & S_x immiscible L/L S_o S_x
2. S_x cannot irreversibly React
3. Specificity
4. S_x easily Removed

Volume

- ~~1. Temp~~
2. pH
- ~~3. Pressure~~
4. ionic strength

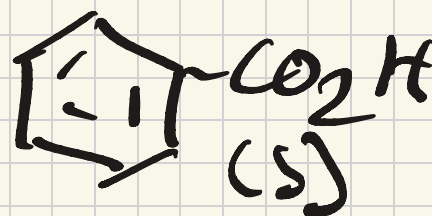




Sol org.
insol H₂O

insol org
Sol H₂O

20 mL NaOH
ice



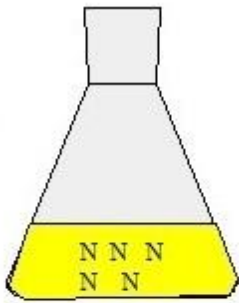
0.2 g Unknown B, N 1:1

10 mL Ethyl acetate (EA)

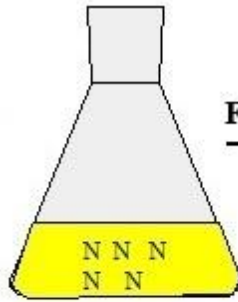
1 x 10 mL HCl

10 mL HCl (B) x 2

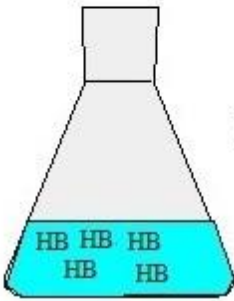
10 mL EA (N) x 2



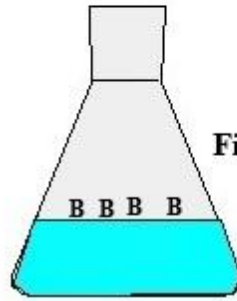
Dry with Sodium Sulfate



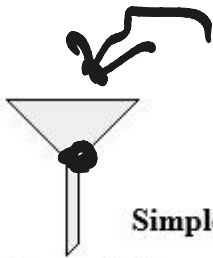
Filter with glass funnel



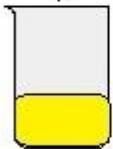
Neutralize with NaOH



Filter with Buchner Funnel

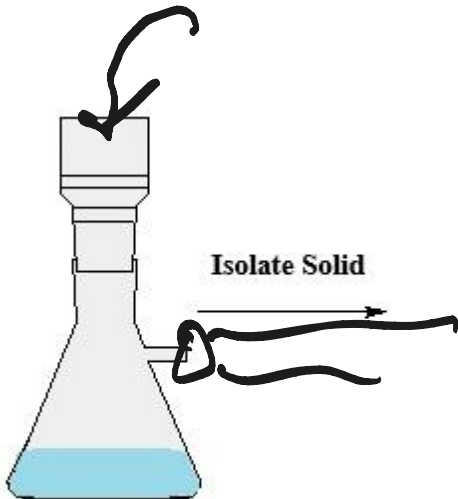


Simple Distillation



pH paper

decan't N(s)



Isolate Solid



B(s)

